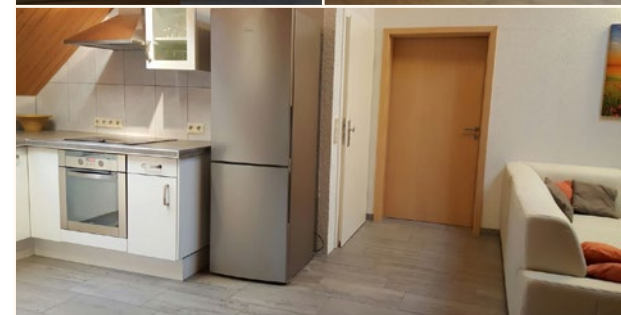


Guesthouse Rheinhessen

Our freshly renovated guesthouse allows in a very generous ambience of 180m² (1938ft²) for up to 10 people a pleasant stay.

Location: Nahestraße 29 • 55593 Rüdesheim/Nahe



Holiday Apartment Gräfenbach

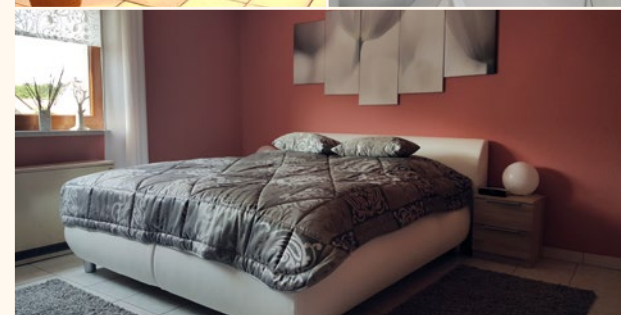
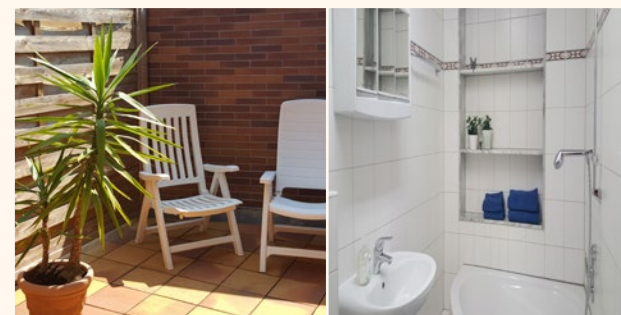
The biggest of our holiday apartments with 140m² (1507ft²) allows a generous allocation with up to 8 people in four bedrooms.

Location: Nahestraße 33 a • 55593 Rüdesheim/Nahe

Holiday Apartment Rosengarten

One of our biggest holiday apartments with 110m² (1184ft²) allows a comfortable and pleasant stay for 2-6 people. This nice and bright vacation domicile is equipped modernly and comfortably with high-quality interior and located in the first upper floor.

Location: Nahestraße 33 a • 55593 Rüdesheim/Nahe



Holiday apartment wanted? Welcome at the Nahe

At our place you find your modernly and comfortably equipped holiday apartments located not far of the town of Bad Kreuznach.

It expects you an individual and unique place for your vacation in the middle of Germany. Also, **assemblers and enterprises** are welcomed guests. From our location you reach the town center of Bad Kreuznach after 4km (2.5mi), Mainz after 37km (23mi), Wiesbaden after 41km (25.5mi) and Rüdesheim at the Rhine after 17km (10.5mi). You get to the international airport Frankfurt/Main in 75km (47mi) and the airport Frankfurt-Hahn in 40km (25mi).

Towels and bedclothes are laid out ready for you in all our accomodations. The final cleaning is contained in the rental price and **free WiFi is available** in all our apartments. **Free parking is at your disposal** (reservations are not possible).

Gästehaus
Rosengarten

We are looking forward to your request:

phone: + 49 (0) 151-68143615
Nahestraße • 55593 Rüdesheim/Nahe
info@rosengarten-nahe.de • www.rosengarten-nahe.de

Gästehaus
Rosengarten



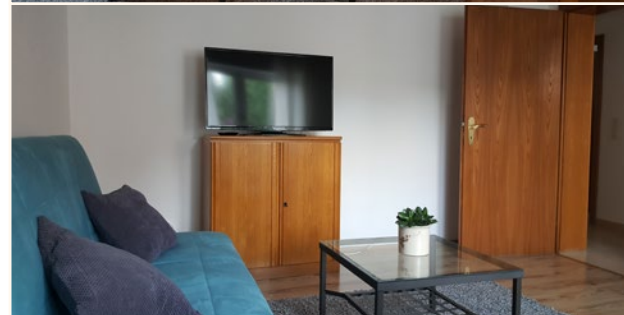
Welcome
at the Nahe



Holiday Apartment Nahe

Holiday apartment Nahe has 50m² (538ft²) sufficient space for 2 people. This beautiful and bright vacation domicile is equipped comfortably and located in the first upper floor. The apartment allows an extra bed and therefore can take an additional guest.

Location: Nahestraße 20 • 55593 Rüdesheim/Nahe



Holiday Apartment Ellerbach

Completely equipped and comfortable homely furnished holiday apartment which has 50m² (538ft²) and therefore enough space for 2-3 people. This nice and bright vacation apartment is furnished modernly with high-quality interior and is located in our guest house.

Location: Nahestraße 20 • 55593 Rüdesheim/Nahe

Holiday Apartment Hunsrück

Our holiday apartment Hunsrueck has 80m² (861ft²) and plenty of space for 2-4 people. This beautiful and bright vacation domicile is equipped comfortably and located over two floors in the guest house.

Location: Nahestraße 20 • 55593 Rüdesheim/Nahe



Prices

Prices are for allocations with 2 people (except guesthouse „Rhein Hessen“ - the least allocation is 4 people)

- incl. all additional costs, bedclothes, towels (domestic use) and final cleaning
- incl. free WiFi
- incl. 7% of sales taxes

Holiday Apartment „Rosengarten“	95,00 EUR/day
Holiday Apartment „Gräfenbach“	95,00 EUR/day
Holiday Apartment „Ellerbach“	75,00 EUR/day
Holiday Apartment „Nahe“	75,00 EUR/day
Holiday Apartment „Hunsrück“	85,00 EUR/day
Guesthouse „Rhein Hessen“ (least allocation 4 people)	135,00 EUR/day

- every additional person 10 EUR/day
- toddlers through 3 years are free
- dog- after previous arrangement - 8EUR/day
- minimal rental period for holiday apartments: 3 nights
- minimal rental period for guesthouse Rhein Hessen: 5 nights

Gästehaus
Rosengarten

Payment terms

The bill amount is due to 100% at arrival. For **assemblers and enterprises** a payment by transfer is possible after previous arrangements.